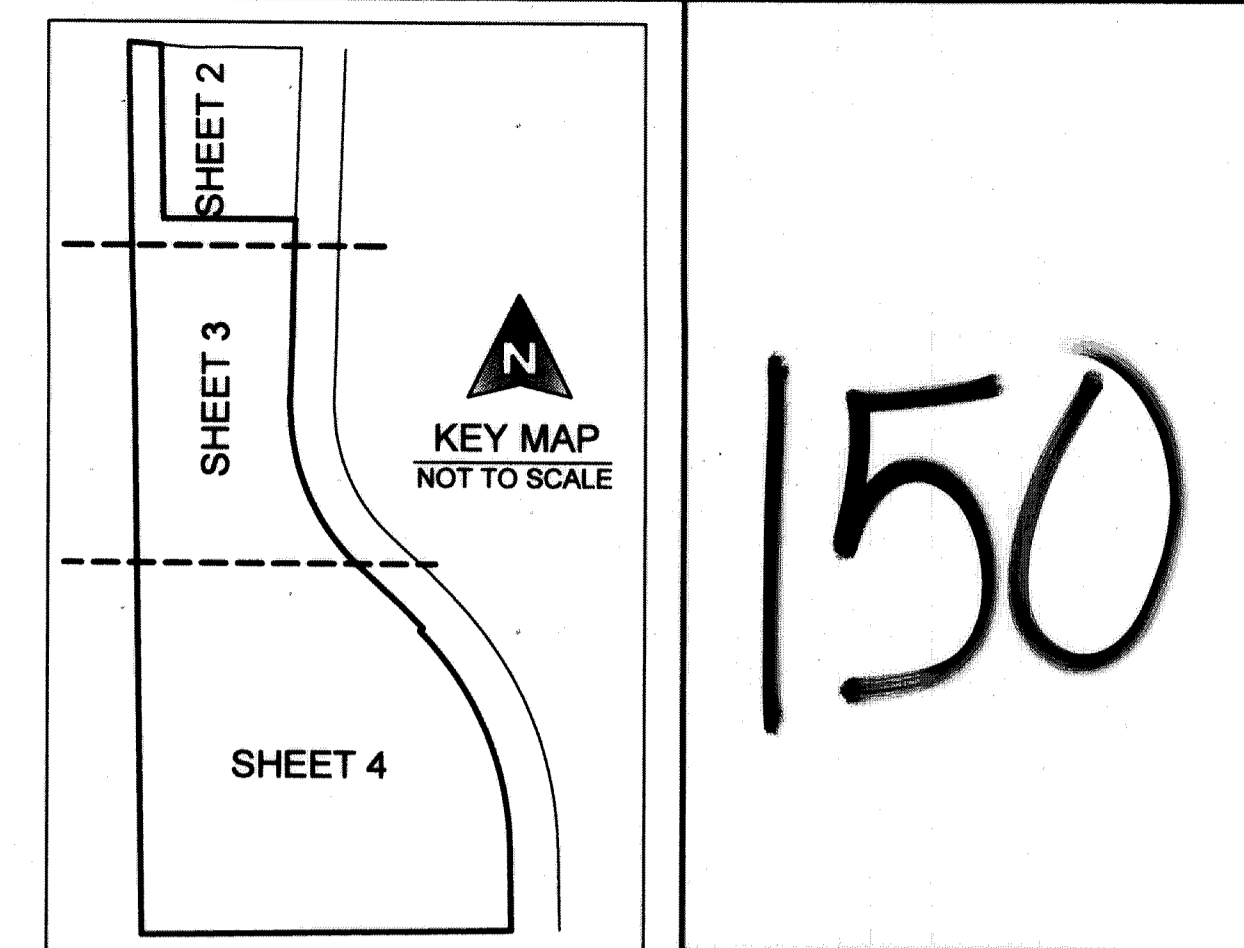
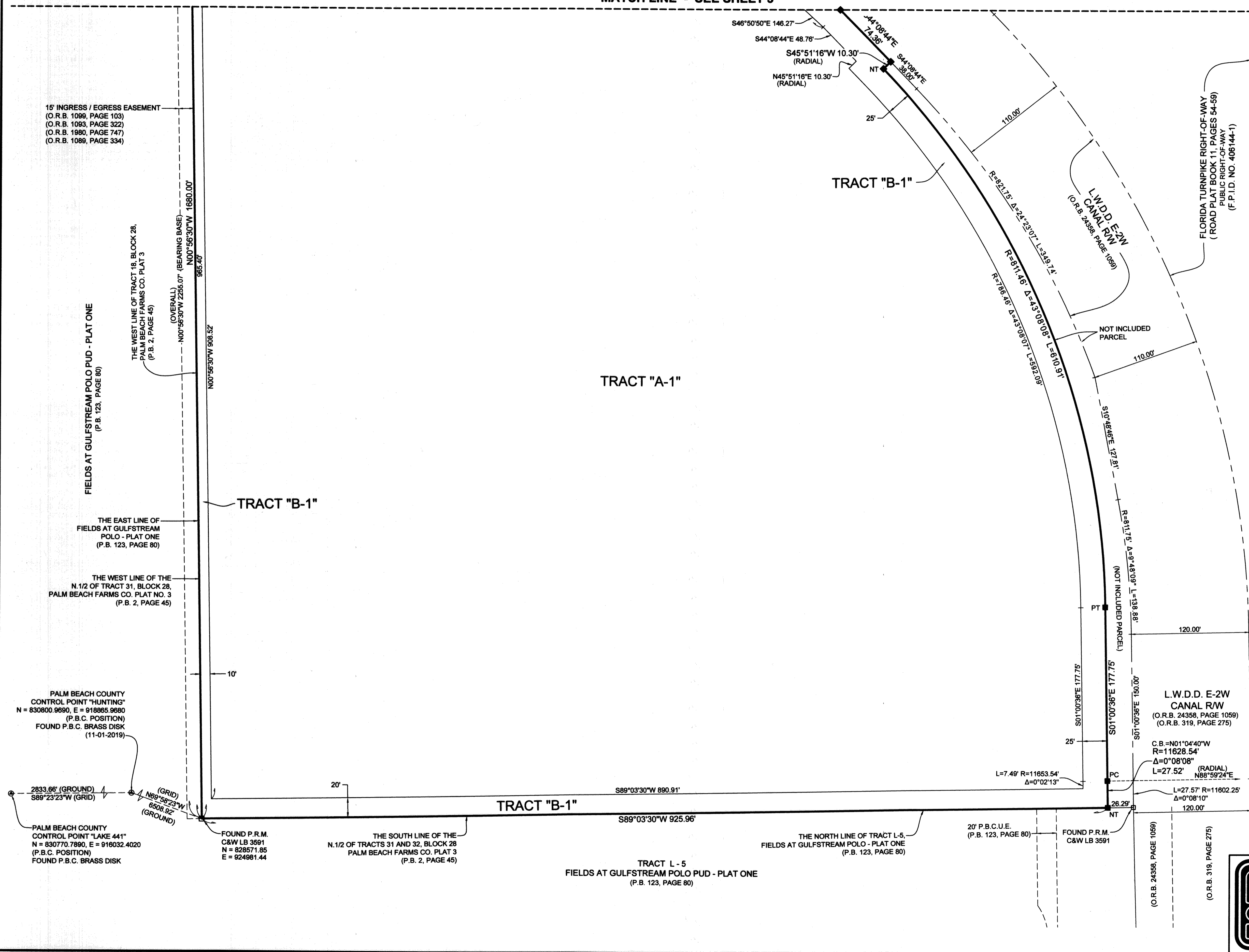


# CATALINA AT LAKE WORTH P.U.D.

BEING A REPLAT OF A PORTION OF TRACTS 2, 15, 17, 18, 31 AND 32, BLOCK 28, PALM BEACH FARMS COMPANY PLAT NO. 3, AS RECORDED IN PLAT BOOK 2, PAGES 45 THROUGH 54, TOGETHER WITH THAT ABANDONED 30 FOOT WIDE RIGHT-OF-WAY LYING BETWEEN SAID TRACTS 15 AND 18, BLOCK 28, AS RECORDED IN OFFICIAL RECORDS BOOK 30727, PAGE 223, ALL OF THE PUBLIC RECORDS OF PALM BEACH COUNTY, FLORIDA, LYING IN SECTION 29, TOWNSHIP 44 SOUTH, RANGE 42 EAST, PALM BEACH COUNTY, FLORIDA.

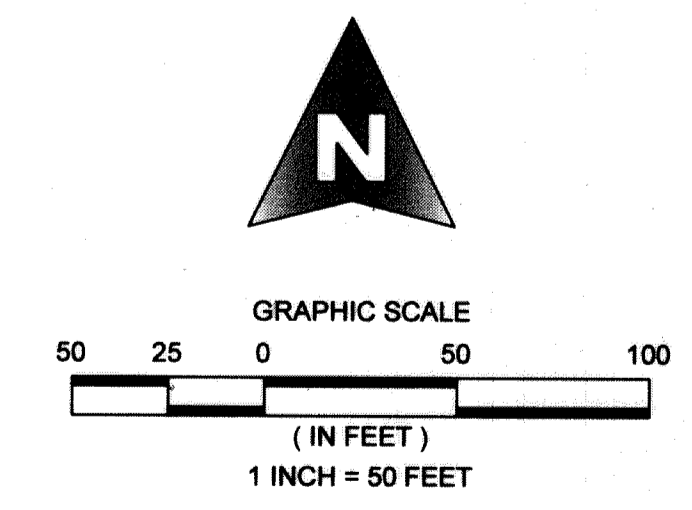


MATCH LINE - SEE SHEET 3



**COORDINATE NOTES:**  
 STATE PLANE COORDINATES SHOWN ARE GRID  
 DATUM = NAD 83, 1990 ADJUSTMENT  
 ZONE = FLORIDA EAST ZONE  
 LINEAR UNITS = US SURVEY FOOT  
 COORDINATE SYSTEM 1983 STATE PLANE TRANSVERSE MERCATOR PROJECTION  
 ALL DISTANCES ARE GROUND  
 PROJECT SCALE FACTOR = 1.0000236  
 GROUND DISTANCE X SCALE FACTOR = GRID DISTANCE  
 BEARINGS AS SHOWN HEREON ARE GRID DATUM, NAD 83 1990 ADJUSTMENT, FLORIDA EAST ZONE.

- LEGEND**
- P.O.C. = POINT OF COMMENCEMENT
  - P.O.B. = POINT OF BEGINNING
  - P.R.M. = PERMANENT REFERENCE MONUMENT
  - P.C.P. = PERMANENT CONTROL POINT
  - O.R.B. = OFFICIAL RECORD BOOK
  - P.B. = PLAT BOOK
  - D.B. = DEED BOOK
  - P.B.C. = PALM BEACH COUNTY
  - RW = RIGHT OF WAY
  - ℄ = CENTERLINE
  - U.E. = UTILITY EASEMENT
  - D.E. = DRAINAGE EASEMENT
  - R = RADIUS
  - L = ARC LENGTH
  - Δ = CURVE CENTRAL ANGLE
  - ⊙ = DENOTES FOUND PALM BEACH COUNTY DISK IN CONCRETE
  - ⊙ = SET NAIL AND ALUMINUM DISK, STAMPED P.C.P. L.B. 2438
  - = SET 4"x4"x24" C.M. WITH ALUMINUM DISK, STAMPED P.R.M. L.B. 2438
  - = DENOTES FOUND P.R.M. (AS SHOWN)
  - N = NORTHING, WHEN USED WITH COORDINATES
  - E = EASTING, WHEN USED WITH COORDINATES
  - L.A.E. = LIMITED ACCESS EASEMENT
  - L.S.E. = LIFT STATION EASEMENT
  - L.M.E. = LAKE MAINTENANCE EASEMENT
  - L.M.A.E. = LAKE MAINTENANCE ACCESS EASEMENT
  - C.M. = CONCRETE MONUMENT
  - NO. = NUMBER
  - P.B.C.U.E. = PALM BEACH COUNTY UTILITY EASEMENT
  - L.W.D.D. = LAKE WORTH DRAINAGE DISTRICT
  - F.D.O.T. = FLORIDA DEPARTMENT OF TRANSPORTATION
  - C.B. = CHORD BEARING
  - S.F. = SQUARE FEET
  - PC = POINT OF CURVATURE
  - PT = POINT OF TANGENCY
  - NT = POINT OF NON-TANGENCY
  - P.U.D. = PLANNED UNIT DEVELOPMENT
  - D. = DESCRIPTION
  - F.P.I.D. = FINANCIAL PROJECT IDENTIFICATION



15' INGRESS / EGRESS EASEMENT  
 (O.R.B. 1089, PAGE 103)  
 (O.R.B. 1093, PAGE 322)  
 (O.R.B. 1980, PAGE 747)  
 (O.R.B. 1089, PAGE 334)

FIELDS AT GULFSTREAM POLO PUD - PLAT ONE  
 (P.B. 123, PAGE 80)

THE EAST LINE OF FIELDS AT GULFSTREAM POLO - PLAT ONE  
 (P.B. 123, PAGE 80)

THE WEST LINE OF THE N 1/2 OF TRACT 31, BLOCK 28, PALM BEACH FARMS CO. PLAT NO. 3  
 (P.B. 2, PAGE 45)

PALM BEACH COUNTY CONTROL POINT "HUNTING"  
 N = 830800.9690, E = 918865.9680  
 (P.B.C. POSITION)  
 FOUND P.B.C. BRASS DISK  
 (11-01-2019)

PALM BEACH COUNTY CONTROL POINT "LAKE 441"  
 N = 830770.7890, E = 918032.4020  
 (P.B.C. POSITION)  
 FOUND P.B.C. BRASS DISK

FOUND P.R.M. C&W LB 3591  
 N = 828571.85  
 E = 924981.44

THE SOUTH LINE OF THE N 1/2 OF TRACTS 31 AND 32, BLOCK 28 PALM BEACH FARMS CO. PLAT 3  
 (P.B. 2, PAGE 45)

TRACT L - 5  
 FIELDS AT GULFSTREAM POLO PUD - PLAT ONE  
 (P.B. 123, PAGE 80)

THE NORTH LINE OF TRACT L-5, FIELDS AT GULFSTREAM POLO - PLAT ONE  
 (P.B. 123, PAGE 80)

20' P.B.C.U.E. (P.B. 123, PAGE 80)

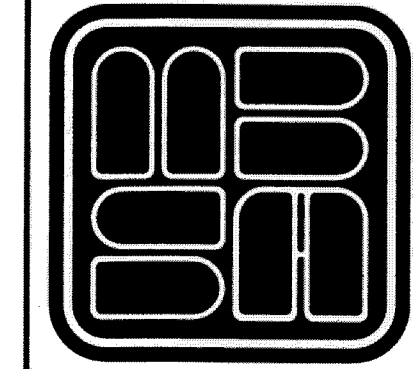
FOUND P.R.M. C&W LB 3591

L.W.D.D. E-2W CANAL R/W  
 (O.R.B. 24358, PAGE 1059)  
 (O.R.B. 319, PAGE 275)

C.B. = N01°04'40"W  
 R = 11628.54'  
 Δ = 0°08'08"  
 L = 27.52' (RADIAL)  
 N88°59'24"E

L = 27.57' R = 11602.25'  
 Δ = 0°08'10"

SHEET 4 OF 4



**MICHAEL B. SCHORAH & ASSOCIATES, INC.**  
 1850 FOREST HILL BLVD., SUITE 206  
 WEST PALM BEACH, FLORIDA 33406  
 EB# 2438 TEL. (561) 968-0080 FAX. (561) 642-9726 LB# 2438

CATALINA AT LAKE WORTH P.U.D.